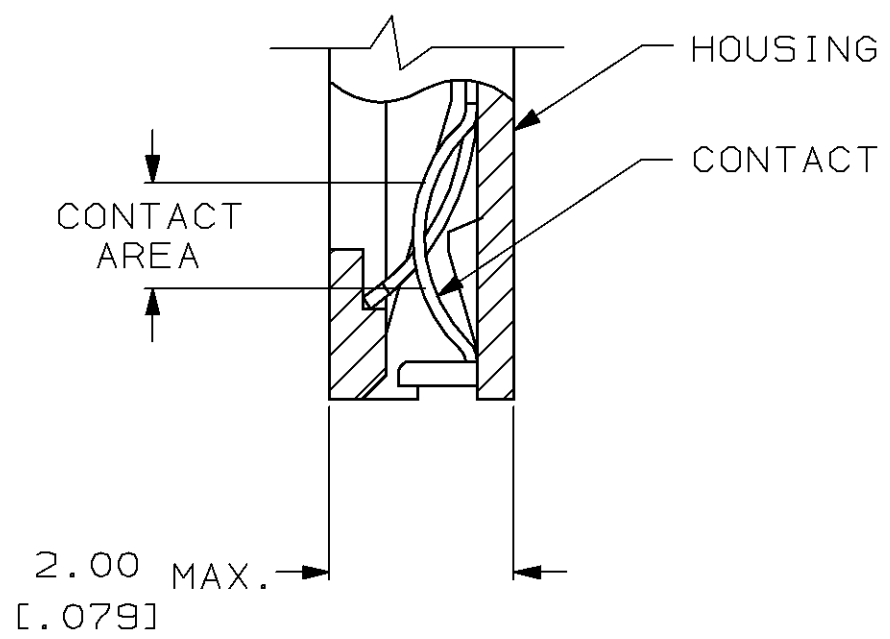
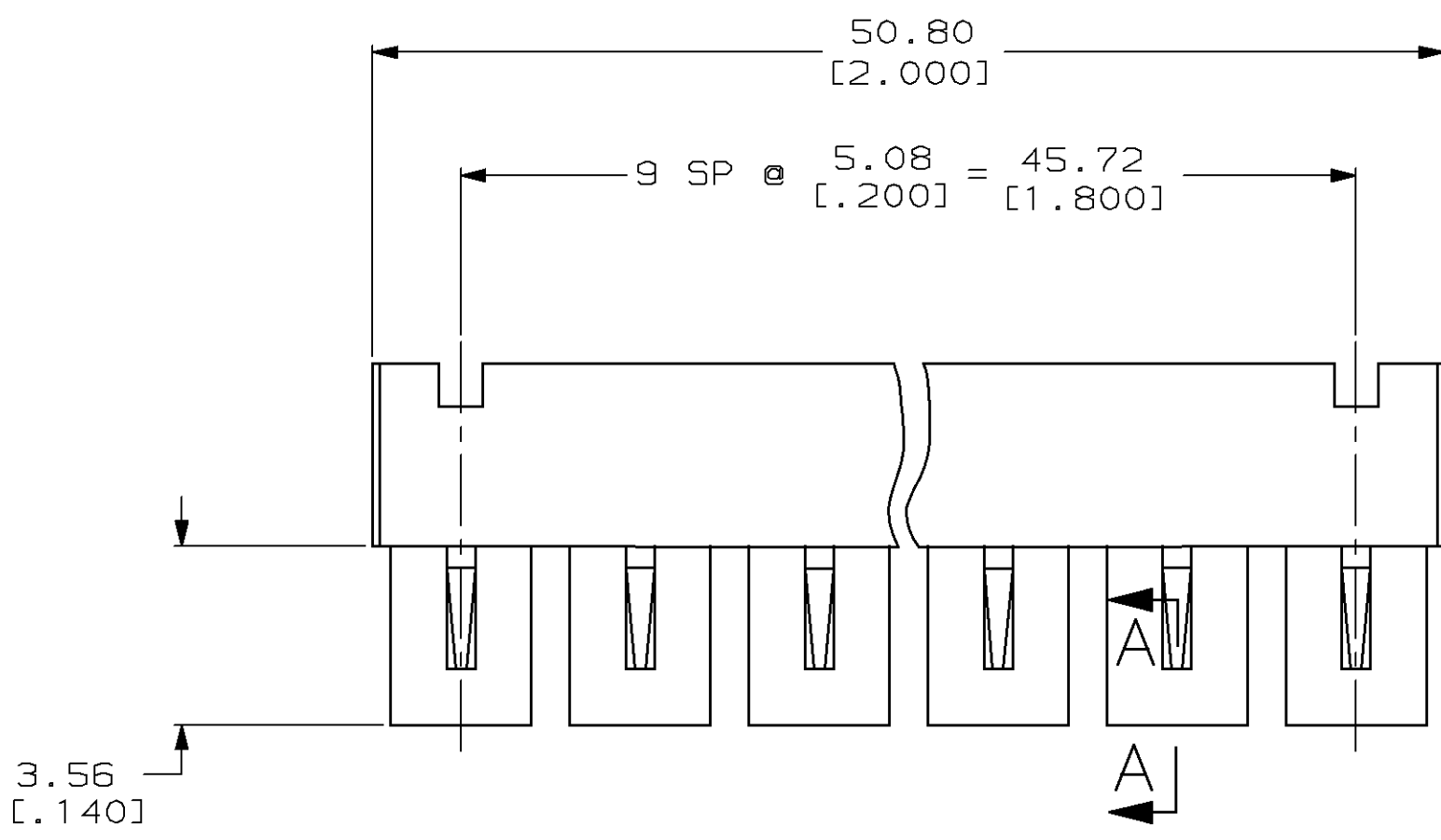
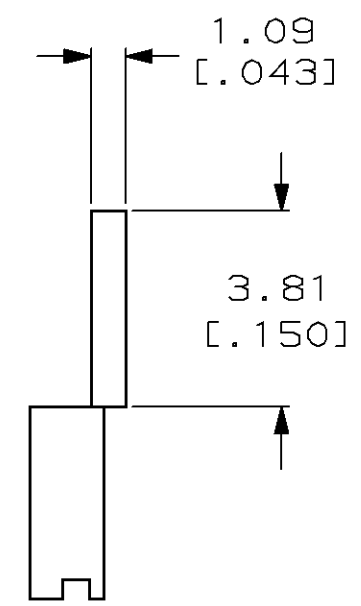
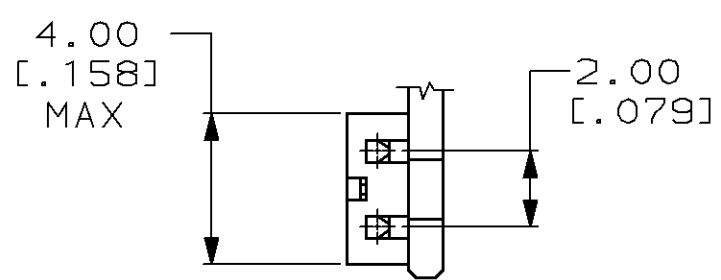


LOC		DIST		REVISIONS				
AG	53	P	F	ZONE	LTR	DESCRIPTION	DATE	APPD
					F	OBSOLETE -1 PER 0440-0120-96	7-2-97	RT



SECTION A-A  
 SCALE 10:1  
 10 PLACES

- ① HOUSING MATERIAL: BLACK THERMOPLASTIC, 94V-0.
- ② CONTACT MATERIAL: BERYLLIUM COPPER.
- ③ CONTACT PLATED WITH 0.00038 [.000015] GOLD IN CONTACT AREA OVER 0.00127 [.000050] NICKEL OVERALL.
- ④ CONNECTOR MATES WITH 0.5mm [.020] SQUARE POSTS ON 2.0mm [.079] CENTERS, MINIMUM POST LENGTH 2.54 [.100].
- ⑤ PART NO. DENOTES INDIVIDUAL TWO POSITION SHUNT, WHICH IS PACKAGED ON BREAKAWAY COMBS OF TEN SHUNTS.
- ⑥ CONTACT PLATED WITH 0.00076 [.000030] GOLD IN CONTACT AREA OVER 0.00127 [.000050] NICKEL OVERALL.
- ⑦ CONTACT PLATED WITH 0.00381 [.000150] MIN. BRIGHT TIN-LEAD OVER 0.00127 [.000050] MIN. NICKEL OVERALL.



	⑥	382575-3
	③	382575-2
OBSOLETE	⑦	382575-1
	FINISH	PART NO ⑤

DO NOT SCALE PRINT UNLESS SPECIFIED DIMENSIONS IN mm [INCHES] TOLERANCES ON: 2 PLC DEC ± - 3 PLC DEC ± 0.26 [.010] ANGLES ± -	DR 1-8-93 C.WHITT	AMP Incorporated Harrisburg, PA 17105-3608	
	CHK 1-8-93 R.TALLEY		
MATERIAL	APPD 1-8-93 D.HUFFMAN	NAME	
① ②	APPD 1-8-93 M.STADDON	MINI-SHUNT ASSY, 2mm	
FINISH	PRODUCT SPEC	SIZE	CAGE CODE
SEE TABLE	APPLICATION SPEC	C	00779
	WEIGHT -	SCALE	DRAWING NO
		4:1	382575
			SHEET 1 OF 1